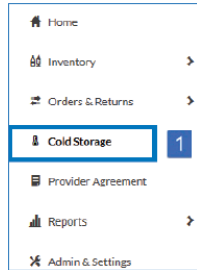


# Cold Storage Units

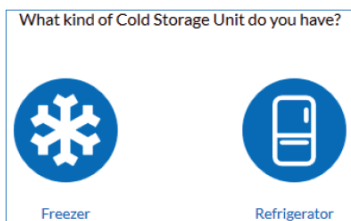
Users can manage Cold Storage Units, track temperatures, and upload temperature logs. Cold Storage Units include Freezers and Refrigerators with predefined acceptable temperature ranges.

## Create a Cold Storage Unit

1. Click the **Cold Storage** link in the navigation menu.



2. On the bottom of the Cold Storage page, click **Add Cold Storage Unit**.
3. Select either **Freezer** or **Refrigerator**.

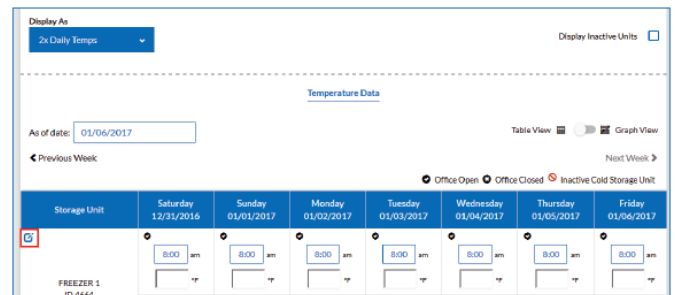


4. Enter at least the required information. You can also optionally add the location by clicking **Add Location** and entering that information.

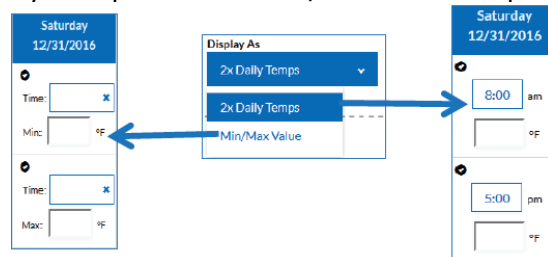
5. When finished, click **Save** to save the new refrigerator or freezer information and return to the main Cold Storage page.

## Enter Temperatures

The Temperature Data page displays all units. On this page, you can enter temperature recordings and edit Cold Storage Unit details (click the Edit icon (✎)).



Change the Display As option to move between the 2x Daily Temps and the Min/Max Value displays.



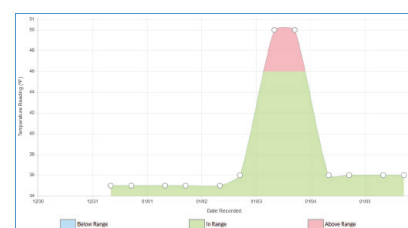
Once temperatures are entered, click **Save**.

## Display the Graph View

To display the Graph View, move the toggle switch (located on the top right side of the Cold Storage page) to the Graph View setting.



On the Temperature Data page, select the desired Cold Storage Unit and date range. A graph is created based on those settings.



## Upload a Temperature Log

1. To upload a temperature log, first click **Upload Temperature Log**.

2. Select the Cold Storage Unit from the drop-down list.
3. Select an existing data profile from the Select Profile drop-down list.
4. Select the file to upload and click **Import**.

## Create a New Data Profile

1. Instead of selecting an existing data profile from the Select Profile drop-down list, click the **Define Data Profile** button.

2. Enter a unique, descriptive name for the data profile.
3. If the first line of the data file is not a header line, deselect the **Does the import start with a header line?** option.
4. Copy a non-header sample line from the file and paste it into the Sample Line field.
5. Select the data file's delimiter style: Tab Delimited, Delimited (and then enter the delimiter character, such as a comma or pipe symbol), or Fixed Width (and enter the length of each field, separating each with a comma).
6. Click **Evaluate Sample Line**.

7. For each data field found in the sample line, the application requests a Field Definition and, possibly, and Data Format. Enter all of the information for each data field and click **Submit Definitions**.

Sample Field	Field Definition	Data Format
2	N/A	Format Ignored
10/28/2016	Temperature Record Date	MM/DD/YYYY
2:31:22 PM	Temperature Record Time	hh:mm:ss a
42.3	Import Temperature	Fahrenheit(F)

8. Back on the Temperature Upload page, select the new profile from the Select Profile drop-down list, select the file to be uploaded, and click Import. A success or error message appears on the page. If it is an error message, view the log information for details (click **View Logs**).

9. To report the temperatures to the state and auto-populate the temperature fields on the Temperature Data page, click **Report to State**.